

# MA Literature and Culture

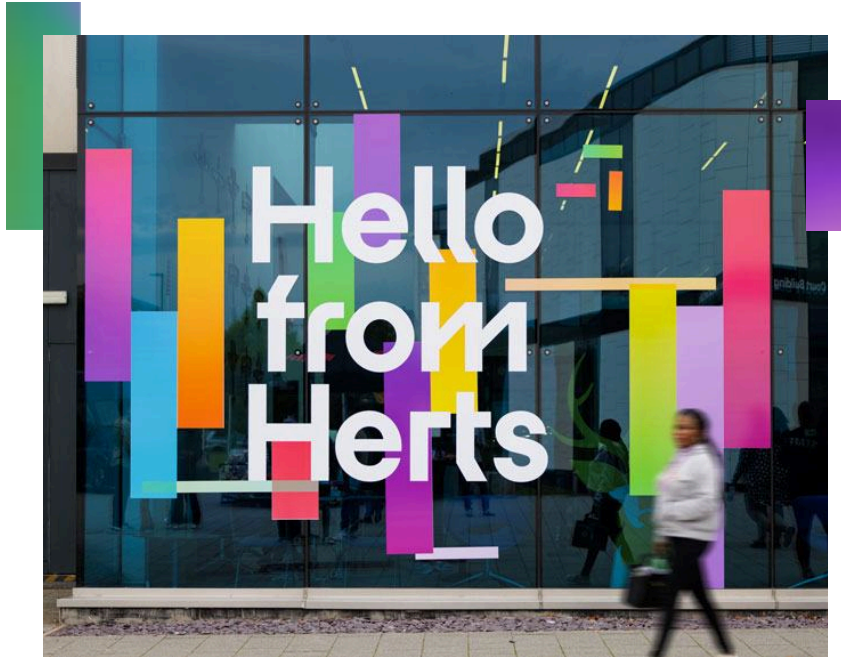
100% Online | Part-Time

Explore Literature,  
Culture, and History

**Part-Time & 100% Online**

For more information on the online MA Literature and Culture programme  
contact an Enrolment Consultant by email at [online@herts.ac.uk](mailto:online@herts.ac.uk)





## MSc Literature and Culture Programme Introduction

The University of Hertfordshire's MA Literature and Culture is an online, part-time programme designed to provide a comprehensive understanding of literary texts within their social and historical contexts. This programme offers a unique opportunity to explore a wide range of literary works and to develop advanced research and critical analysis skills. Students will engage with significant literary debates and theoretical approaches, gaining a deep appreciation for the complex relationship between literature and culture.



Research  
Excellence

**78%**  
of research

78% of research has been ranked as world-leading or internationally excellent (Research Excellence Framework 2021)

## Study with a Modern UK University Rooted in Industry

At the University of Hertfordshire, we champion a practical and forward-thinking approach to higher education. Home to a dynamic community of 32,000 students from over 140 countries, the University excels in bridging academic study with real-world application. You'll benefit from high-calibre instruction delivered by experts actively engaged in research that resonates beyond academia. With an impressive history of over 70 years, we've established robust industry connections that facilitate a wealth of professional networking opportunities.



**Herts Beats Faster**

For more information on the online MA Literature and Culture programme contact an Enrolment Consultant by email at [online@herts.ac.uk](mailto:online@herts.ac.uk)



## Deepen Your **Literary Analysis**

The Literature and Culture programme at the University of Hertfordshire is meticulously designed for those with a passion for literature who want to deepen their understanding of how texts engage with contemporary cultural issues. Join this course to:

- Analyse a vast array of literary works, spanning classic to contemporary periods, and develop a refined understanding of their cultural significance.
- Learn to use advanced research methodologies to conduct independent analyses and contribute meaningfully to scholarly discourse.
- Cultivate strong analytical skills to critically examine complex literary and cultural issues.
- Develop transferable skills such as communication, problem-solving, and independent learning, making you a strong candidate for various career paths.

## Who is the **MA Literature and Culture Programme** for?

The MA Literature and Culture Programme is designed to accommodate a diverse range of academic and professional goals. It's ideal for you if you are:

- ✓ Seeking to deepen your understanding of literary texts and their cultural impact.
- ✓ Aspiring to pursue further research or academic endeavours in literature or related fields.
- ✓ Interested in developing advanced critical thinking and analytical skills for a variety of career paths.





Skills  
Development

## 2nd in the UK

Herts is ranked 2nd for postgraduate employability in the Postgraduate Taught Experience Survey (PTES) 2024

## Your Career Path

After completing the MA Literature and Culture, you will be equipped with a strong foundation in literary analysis, critical thinking, and research skills, preparing you for a variety of career paths:

### MA Literature and Culture (Online)

#### Academia

Pursuing a PhD or becoming a lecturer or researcher in literature, cultural studies, or related fields.

#### Publishing

Working as an editor, proofreader, or literary agent.

#### Journalism

Contributing to newspapers, magazines, or online publications as a writer or critic.

#### Education

Teaching English or literature at secondary or higher education levels.

#### Content Creation

Developing engaging content for websites, social media, or marketing campaigns.

#### Public Relations

Crafting compelling narratives to enhance brand reputation and public image.

#### Marketing

Developing marketing strategies based on cultural insights and consumer behaviour.

#### Business and Management

Applying cultural intelligence to leadership and organisational development.

#### Cultural Heritage

Working in museums, galleries, or archives to preserve and interpret cultural artifacts.

#### Film and Television

Contributing to scriptwriting, development, or production as a researcher or story analyst.

#### Non-profit Sector

Working in fundraising, communications, or programme development for cultural organisations.

#### Policy and Government

Influencing cultural policy and legislation through research and analysis.

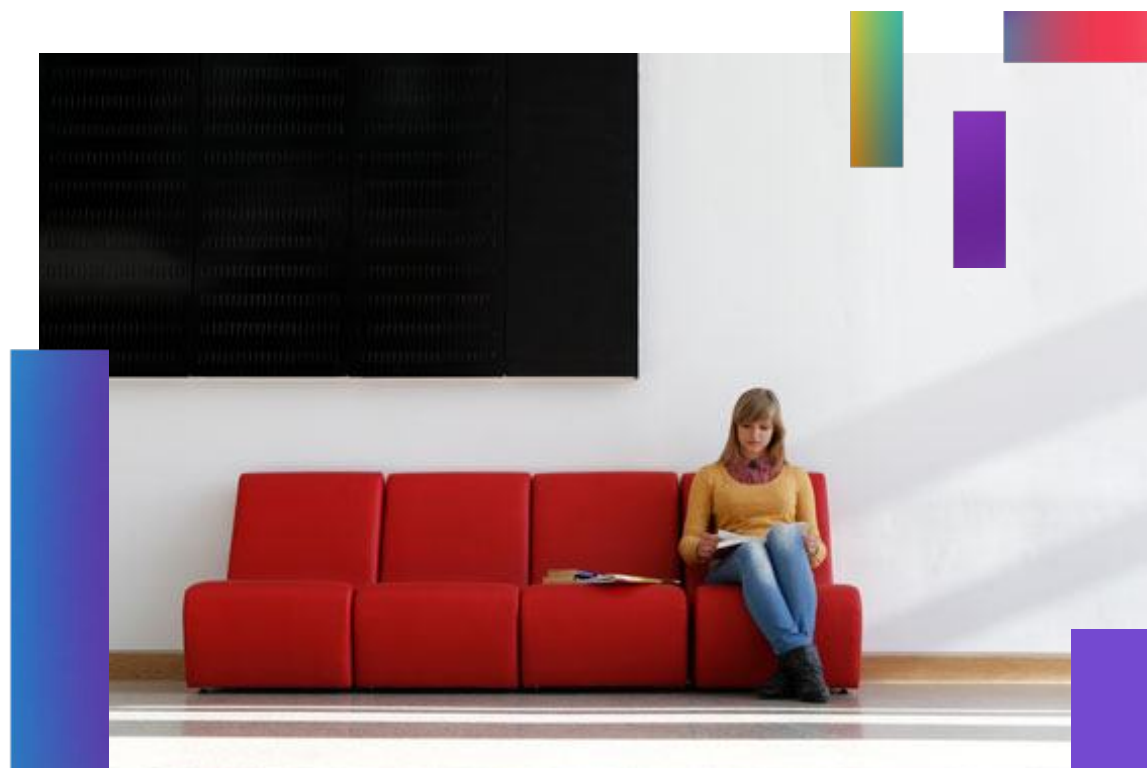
## Join a Creative Arts Department at the **Forefront of Research**

Studying with the School of Creative Arts means joining a faculty renowned for its expertise in literature and culture.

Our programmes combine academic study with a deep engagement with the contemporary world.

Our researchers in English Literature and Creative Writing produce high quality work in fascinating and diverse fields.

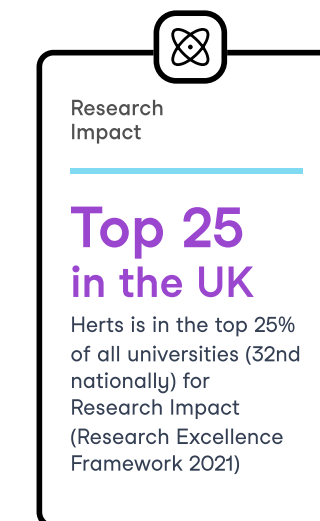
We performed excellently in REF 2021, with 83% of our research outputs rated either 4\* ("world-leading") or 3\* ("internationally excellent"). 100% of our research impact was also rated either 3\* or 4\*.



You will benefit from access to an intellectual environment, informed by our faculty's active research and strong industry connections.

Staff at UH Online are very research-active. Our research projects are wide-ranging and seek to have an impact beyond academia and the University.

We are also part of the University's Heritage Hub working with local partners on a range of different projects.



**Part-Time & 100% Online**

For more information on the online MA Literature and Culture programme contact an Enrolment Consultant by email at [online@herts.ac.uk](mailto:online@herts.ac.uk)



## Programme Leader

Kaja Franck is the programme leader and a lecturer in English Literature at the University. Her thesis, part-funded through a studentship through the research project *Open Graves, Open Minds*, focused on the literary werewolf as an ecogothic monster. She has published on the depiction of wolves and werewolves in *Dracula* and Young Adult fiction. Most recently writing about werewolves, gender and race in *Ginger Snaps Back* for the *Gothic Studies* journal, on the wilderness in *Modern Gothic* (ed. Clive Bloom) and co-authoring a chapter on contemporary werewolves for *Twenty-First-Century Gothic* (eds. Maisha Wester and Xavier Aldana Reyes). She is currently working on chapters looking at werewolf fiction and hybridity, and trolls, religion and ecohorror.

## Qualifications

**English Literature, PhD** | Feb 2017

'The Development of the Literary Werewolf: language, subjectivity and animal/human boundaries', University of Hertfordshire

**English Literature, MA** | Oct 2008

'Incestuous Daughters and Absent Mothers: the Literary Vampire's Subversion of the Family', University of Sheffield

## Research Interests

- ✓ Ecogothic criticism
- ✓ Gothic studies
- ✓ Ecogothic approaches to fairies, trolls and werewolves
- ✓ Shark horror
- ✓ Animal studies
- ✓ Vampires in popular culture
- ✓ Ballet as a Gothic medium

## Projects

### 'Danse Macabre'

Co-founded with Dr Karen Graham and Kate Harvey, focused on researching the Gothic nature of dance, particularly ballet.

2022 - Present | [@dansegothic](#)

### 'Open Graves, Open Minds'

Led by Dr Sam George and Dr Bill Hughes, dedicated to the study of the Undead and other monsters in popular culture.

2014 - 2024 | [@OGOMProject](#)

## Core Modules

To obtain the MA in Literature and Culture, you are expected to cover a comprehensive 180-credit curriculum, designed to provide a deep understanding of literary texts and their cultural contexts. The standard core modules on the programme are as follows:

- ✓ **1. Earth Words: Literature, Place and Environment (30 credits)**  
This module explores the intricate relationship between literature and a range of settings: urban, industrial and technological; rural, pastoral, and wilderness; domestic and foreign; global and local; unsustainable and sustainable. It examines how literary texts represent, engage with, and shape our understanding of environmental issues, from Romantic conceptions of nature to contemporary eco-criticism. You will develop a critical awareness of the ways in which literary works both reflect and influence cultural attitudes towards the environment.
- ✓ **2. Historical Fiction: Memory, Nostalgia and the Past in Contemporary Culture (30 credits)**  
This module investigates the complex ways in which historical fiction constructs and reinterprets the past. Focusing on narrative techniques, cultural contexts, and the interplay between memory and history, you will develop a sophisticated understanding of how these texts engage with broader historical and cultural debates. The module will explore a range of genres and time periods, from Victorian historical novels to contemporary postmodern metafiction and look at how literature set in the past connects with current cultural and political debates such as those relating to post-colonialism, gender and environmentalism. Learn how to analyse and interrogate the relationships between texts and history, both at a specific moment and across time.
- ✓ **3. Eurocrimes (30 credits)**  
Eurocrimes explores the rise and popularity of European (non-English speaking) crime dramas, delving into their unique narratives and cultural significance. The module will cover notable subgenres such as 'Scandin noir' and reflect the MA's emphasis on contemporary texts. Dive into the world of gripping, dark storytelling that has captivated audiences worldwide and examine the themes and stylistic elements that define this influential genre.
- ✓ **4. Research Methods 1: Theoretical and Critical Debates (15 credits)**  
This module aims to deepen and develop students' knowledge and understanding of some of the theoretical approaches which have been influential in literary studies. Students are invited to examine the central tenets and critical methodologies of each approach, to test these via a reading of a literary text, and to assess the strengths and limitations of the approach. There will be opportunities to compare and contrast different approaches. Areas covered may include liberal humanism and practical criticism; new historicism and cultural materialism; feminism, masculinity theory, and queer theory; postcolonial theory, psychoanalytic theory; ecocriticism. The module aims to enable students to select, deploy and justify appropriate theoretical approaches to postgraduate standard in assessed work on this and other modules on the Master's programme.
- ✓ **4. Research Methods 2: Advanced Research Skills (15 credits)**  
This module is designed to develop advanced skills crucial for postgraduate study in Literature. You will cover topics such as using search engines, accessing electronic journals, and interdisciplinary research. The module also focuses on structuring longer works, writing abstracts, and creating annotated bibliographies. Additionally, it prepares you to present research and write for publication, equipping you for your Master's dissertation and further postgraduate research, while building transferable skills for various careers. By the end of this module, you'll submit a proposal for your own research.
- ✓ **5. Dissertation Project (60 credits)**  
This module provides the opportunity to undertake a substantial independent research project, culminating in a written dissertation of approximately 15,000 words. This gives you the opportunity to explore a suitable literary and cultural topic of your choice in depth and detail. You will be expected to demonstrate advanced research skills, critical thinking, and the ability to produce original and insightful work.



### Assessments

Each 15-credit module consists of 6 weeks of learning followed by 2 weeks of assessments, while 30-credit modules involve 12 weeks of learning and 4 weeks of assessments. You'll be evaluated using a diverse range of methods to measure your understanding and skills, which may include:

- ✓ Essays
- ✓ Critical analyses
- ✓ Presentations
- ✓ Written classroom discussion forums
- ✓ Class debates
- ✓ Project reports
- ✓ Critical self-reflection exercises

### Duration

The programme is delivered in a part-time mode allowing you to combine your studies with other work and life commitments. The total duration of the course is a minimum of 24 months or 2 years for the 180-credit full MA programme.

### Exit Options

While the full MA requires 2 years to complete, you have the option to exit the programme early with a:

1. Postgraduate Certificate after achieving 60 credits within 8 months
2. Postgraduate Diploma after completing 120 credits over 16 months.

### Entry Dates

You can commence your studies when it is convenient to you with two entry dates in the year.

#### For the 2025/2026 academic year:

2025 — 15th September

2026 — 19th January





## Your Online Learning Experience

The University of Hertfordshire's MA Literature & Culture course delivers a fully online and asynchronous learning experience through Canvas, the University's virtual learning environment. Canvas is your personalised portal, providing you with access to study materials, enabling interactions with tutors and peers, facilitating online discussions, and hosting assessments. It also offers you a wealth of online resources including eBooks and eJournals.

While the course offers a great deal of flexibility, it is not self-paced. Each module has set start and end dates and includes fixed deadlines for assignment submissions. This permits for a collaborative learning environment where everyone progresses along the course at the same pace. Modules follow directly one after the other with no scheduled breaks in between (with the exception of University breaks over Easter and Christmas periods). This structure balances the flexibility of online learning with the structure needed to successfully navigate your course and complete it in just 2 years.

## Technical Requirements

You can study this course anytime and from anywhere in the world but you will need to have access to a suitable desktop computer or laptop and a stable internet connection.

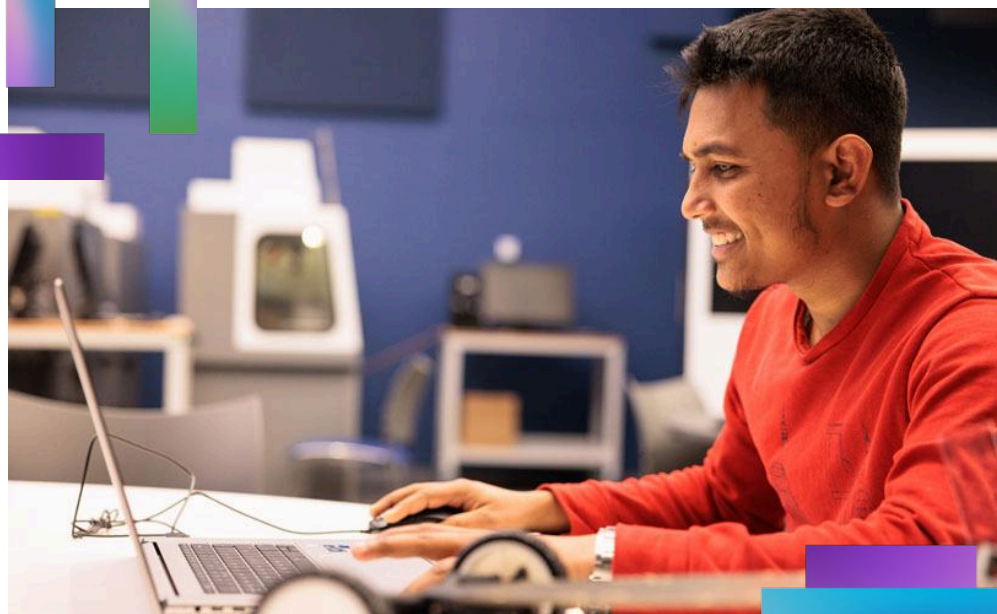
## Recommended Study Time Per Week

While we don't expect you to be online all the time, we recommend dedicating approximately 15 to 20 hours per week to your studies and managing that time flexibly according to your own schedule.

### Dedicated **Student Support** Online

As an online student at the University of Hertfordshire, you will receive multi-tier support tailored to the unique requirements of distance learning and postgraduate study. You will have access to:

- **A programme leader** for overarching course guidance and assistance.
- **Module leaders** who provide guidance with assessment queries and clarifying learning points.
- **A student support team** who will assist you with managing your schedule and pastoral support.
- **Online events**, meet and greets, Q&A sessions, study skills orientation, and continuous Canvas platform support.
- **Student Wellbeing** units, University Disability Advisors & Hertfordshire Student's Union.



Student  
Experience

**5th  
in the UK**

Herts is ranked 5<sup>th</sup>  
of all UK  
universities in the  
Postgraduate  
Taught Experience  
Survey (PTES 2024)

### Career Service

As an online student at the University of Hertfordshire, you will have access to the dedicated Careers and Employment and Enterprise service online, supported by their outstanding jobs portal, HandShake.

They are here to help you to develop your skills and make the best decisions for your future, offering assistance in:

- Searching for work experience opportunities
- Advice and tips on how to create the perfect CV
- Applying for jobs
- Undertaking further study
- Starting your own business

## Entry Requirements

### Standard Application Requirements:

- **Academic Qualification:** A bachelor's degree, equivalent to a UK second-class Honours degree, ideally in humanities field.
- **English Language Proficiency:** For international applicants whose first language is not English, an IELTS score of 6.0 (no less than 5.5 in any band), or equivalent is required.

Non-standard applicants without a relevant degree will be considered with at least 3 years of relevant work experience.

We offer multiple exemptions from the Proof of English Language Proficiency requirement for those who have worked or studied in an English-speaking country or who have passed an English language test other than IELTS. Please speak to a Student Success Consultant or complete the [online application form](#) to find out if you qualify for an exemption.

## Fees

For the 2025/2026 academic year, the total fee for the MA Literature and Culture programme at the University of Hertfordshire is £10,980. To accommodate different financial situations, the University offers several flexible payment plans:

- **Full Payment:** Pay the entire fee.
- **Pay-as-you-go per module:** £915 for 15-credit modules, £1,830 for 30-credit modules and £3,660 for the dissertation.
- **Instalment Options** to break down the module fee further:
  - Two monthly instalments (75% and 25% of the module fee)
  - Three monthly instalments (50%, 25% and 25% of the module fee)
  - Four equal monthly instalments (25% of the module fee each)

There are no upfront costs related to applying and starting your course. We don't charge an application fee or a deposit. You will get your first notification of fees a few weeks into your first module. There are also no additional costs associated with the programme. You will receive free university access to any required software (if applicable).

# Other Funding Options

All our master's programmes are eligible for government funding in the following countries and territories:

## England

You might qualify for a Postgraduate Master's Loan of up to £12,858 provided by the UK Government. For further information, kindly visit [Student Finance England](#).

## United States of America

If you are located in the USA, you might be eligible to apply online for a private [Sallie Mae student loan](#).

## Wales

For residents of Wales pursuing a part-time, online master's degree, you might be eligible for Postgraduate Master's Finance, which offers up to £19,255 as a combination of grant and loan. For additional information, please visit [Student Finance Wales](#).

## Northern Ireland

Should you be pursuing a part-time, online postgraduate master's degree from Northern Ireland, you might qualify for a Tuition Fee Loan of up to £6,500 to assist with tuition fee expenses. For more information, please visit [Student Finance Northern Ireland](#).



## Application Process

Application for all University of Hertfordshire online degrees is through the dedicated portal <https://applyonline.herts.ac.uk>. The application form is simple and intuitive, and it typically takes an hour or so to complete the basic Profile, Education, Employment, English and Essay sections.

The supporting documents required are:

- Your final degree or highest qualification certificate
- The official transcripts or full statement of results for your degree or highest qualification
- A copy of your passport or ID
- For those applying without a relevant Honours degree: a CV and a letter of recommendation (this may be professional or academic)

International education documents will need to be translated into English by an official translator before submission. You can also attach a copy of your CV or a link to your LinkedIn profile.

## Personal Statement

As part of your application, you will also be requested to submit a 300-500-word essay. In the essay you must detail:

- Why you want to study this course
- How it fits with your goals and aspirations
- What your strengths are as a candidate
- How you plan to cope with the demands of the programme

Once submitted, your application will be assessed by our admissions team and a decision will usually be made within **five working days**. Please speak to an Enrolment Consultant for additional assistance. They will be able to offer personalised support tailored to your unique background and circumstances.

[Book a meeting](#)



[Apply now!](#)

## Regulating Body

University of Hertfordshire programmes are regulated by the Office for Students (OfS) established as the regulator of the English higher education under the provisions of the Higher Education and Research Act 2017 (HERA).

# It's Time to Master Literature and Culture

Your journey into the world of literature and culture begins here. The MA Literature and Culture (Online) programme at the University of Hertfordshire is your opportunity to develop the skills, confidence, and expertise to make a lasting impact in the fields of literature, culture, and beyond. Whether you aim to deepen your literary knowledge, pursue academic research, or apply critical thinking skills in diverse industries, this programme is designed to help you achieve your ambitions.

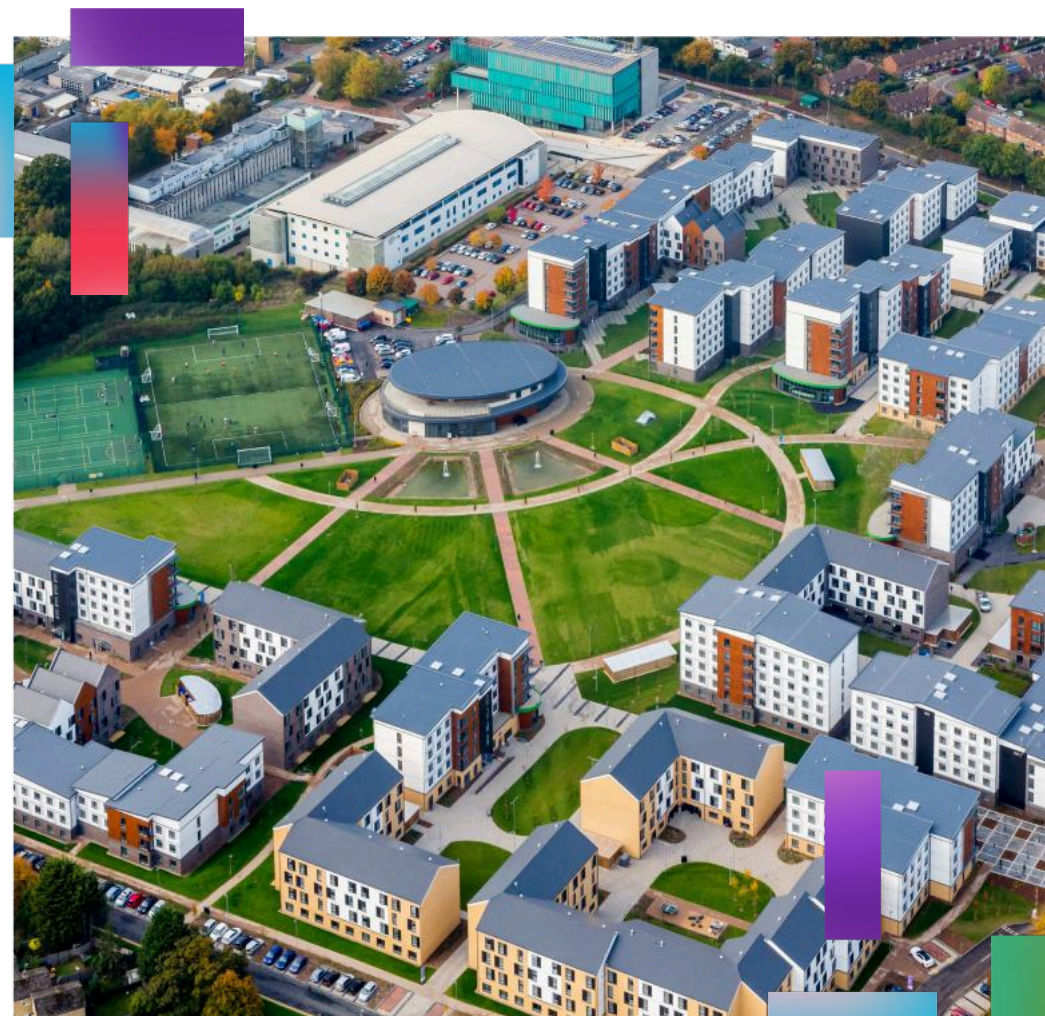
**Don't wait to unlock your potential.** Apply today and join a global community of passionate learners and professionals who are shaping the future of literary studies. Your journey towards intellectual growth and career success begins with a single step – **take it now**.

**Bet on yourself >>>>**

Apply now!

This brochure was reviewed in July 2025. It contains information on the MA Literature and Culture programme online that the University of Hertfordshire ("Herts") intends to run for students who are planning to start their course in 2025-2026. Herts has made every effort to ensure that this information is both helpful and accurate but some changes, for example to courses, facilities or fees, may become necessary due to legitimate staffing, financial, regulatory or academic reasons.

Herts will endeavour to keep changes to a minimum, and to keep applicants informed appropriately. For this reason, it is important that you regularly check the website (<https://online.herts.ac.uk>) for updates or contact Herts using the contact details contained within this document.



**Part-Time & 100% Online**

For more information on the online MA Literature and Culture programme contact an Enrolment Consultant by email at [online@herts.ac.uk](mailto:online@herts.ac.uk)