

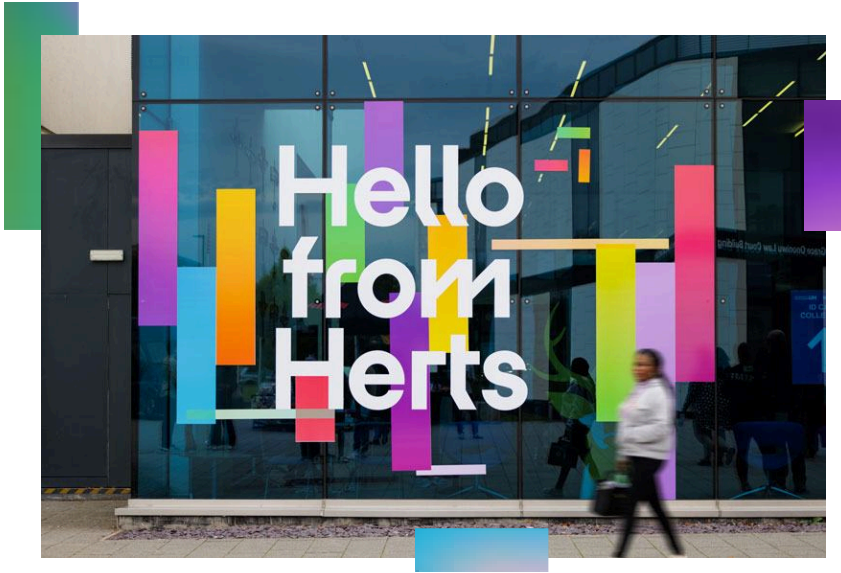
MSc Psychology

100% Online | Part-Time

Master the Mind's Complexity

Part-Time & 100% Online

For more information on the online MSc Psychology programme contact an Enrolment Consultant by email on online@herts.ac.uk



MSc Psychology Programme Introduction

The University of Hertfordshire's MSc Psychology is an online, part-time programme designed to equip graduates from non-psychology disciplines with a comprehensive foundation in psychology. This accredited conversion programme is a perfect first step towards eventual practice as a Chartered Psychologist in the UK and specialisation in one of the designated registration categories such as clinical, forensic, neuro-, occupational and educational psychology.



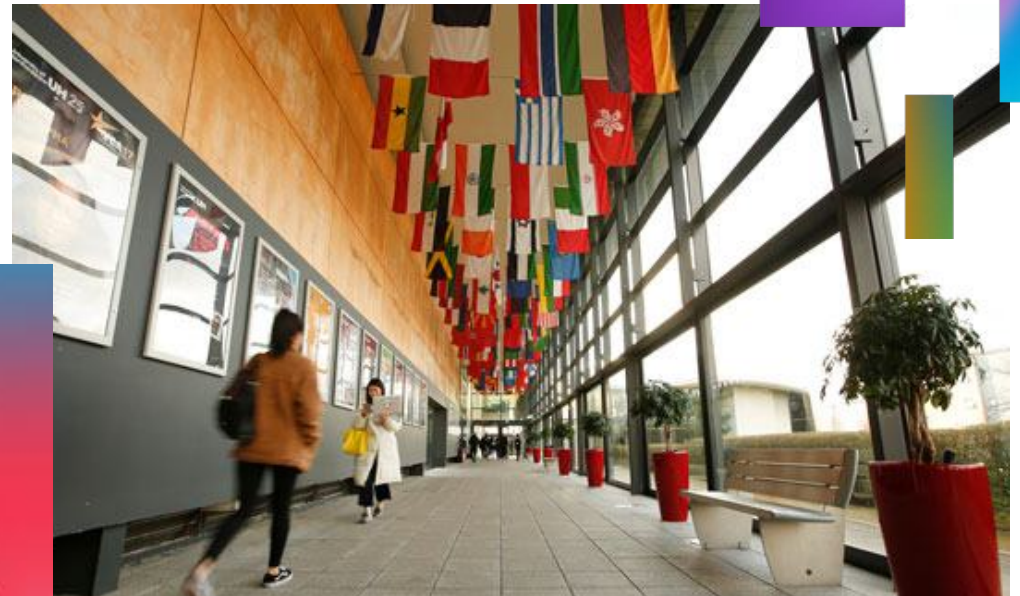
Accredited
Programme

BPS
Accredited

This programme is British Psychological Society (BPS) accredited, marking the first step towards becoming a Chartered Psychologist in the UK.

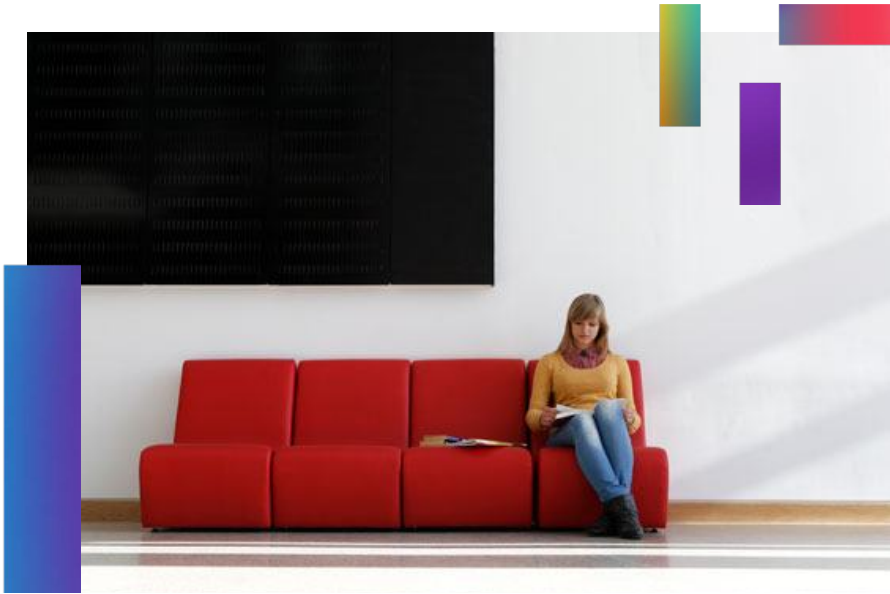
Study with a Modern UK University Rooted in Industry

At the University of Hertfordshire, we champion a practical and forward-thinking approach to higher education. Home to a dynamic community of 32,000 students from over 140 countries, the University excels in bridging academic study with real-world application. You'll benefit from high-calibre instruction delivered by experts actively engaged in research that resonates beyond academia. With a history of over 70 years, we've established robust industry connections that facilitate a wealth of professional networking opportunities.



Part-Time & 100% Online

For more information on the online MSc Psychology programme contact an Enrolment Consultant by email on online@herts.ac.uk



Study the **Mind** & Enhance Your **Career**

The MSc Psychology (conversion) programme offers a comprehensive curriculum to provide students with a solid foundation in the core domains of developmental clinical and forensic psychology, research methodology and individual differences. Study this course to:

- Gain a profound understanding of the inner workings of the human psyche and master key psychological concepts and theories.
- Develop your passion and knowledge for psychology without disrupting your career or personal life.
- Take the first step towards becoming a Chartered Psychologist and further specialisation in the field.
- Benefit from robust support from enrolment to graduation, including faculty expertise and access to student support.
- Enhance your current role or pivot into a new career in psychology by acquiring skills applicable across various professions.

Who is the **MSc Psychology** for?

This programme is meticulously designed to accommodate a diverse range of professional aspirations and academic backgrounds.

It is ideal for you if you are:

- ✓ Looking to advance your current career by developing practical insights into human behaviour.
- ✓ Aiming to start on the path of becoming a Chartered Psychologist by gaining Graduate Basis for Chartered Membership (GBC) with the British Psychological Society (BPS).
- ✓ Pursuing your passion for understanding the complexities of the human mind.

Part-Time & 100% Online

For more information on the online MSc Psychology programme contact an Enrolment Consultant by email on online@herts.ac.uk



Skills
Development

2nd in the UK

Herts is ranked 2nd
for skills development
in the Postgraduate
Taught Experience
Survey (PTES) 2024

Your Career

After completing your MSc, you will be well-positioned to further specialise your knowledge and pursue additional training required for a career as a Chartered Psychologist. This programme provides a broad foundation in the core domains of psychology required as the basis for future specialisation in a wide array of psychological practice categories:

Psychotherapy

Offering therapeutic treatment for a range of mental health issues.

Counselling Psychology

Helping people with emotional, social, and mental health issues.

Forensic Psychology

Applying psychological knowledge in legal contexts.

Counsellor

Providing therapeutic support.

Academic and Research Careers

Contributing to the scientific study and teaching of psychology.

Sport and Exercise Psychology

Enhancing athletic performance and promoting physical activity.

Occupational Psychology

Improving workplace performance and employee well-being.

Clinical Psychology

Diagnosing and treating mental, emotional, and behavioural disorders.

Health Psychology

Promoting healthy behaviours and understanding psychological aspects of health and illness.

Neuropsychology

Studying the brain's impact on behaviour and cognition, often in clinical settings.

Educational Psychology

Supporting educational and developmental needs in children and young people.

Psychology within the Prison and Probation Services

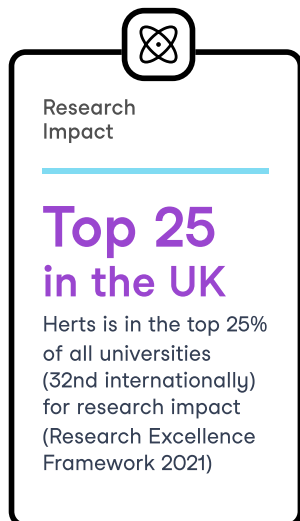
Applying psychological principles to support rehabilitation.



BPS Accreditation

The University of Hertfordshire's MSc Psychology (Conversion) is accredited by the British Psychological Society (BPS). The course aligns with the Graduate Basis for Chartered Membership (GBC) standards.

By successfully completing our programme with an average grade of 50% or higher, and achieving a pass grade or higher in the Research Project in Psychology module, you will meet the requirements for Graduate Basis of Chartered Membership of the British Psychological Society (GBC). This marks the first step towards becoming a Chartered Psychologist in the UK, granting you eligibility to pursue further specialist training in Clinical Psychology or Clinical Neuropsychology, Counselling, Educational Psychology, Forensic Psychology, Sports and Exercise Psychology, or Occupational Psychology.



Study with a Psychology Faculty Known for Excellence and Innovation

Studying online with the Psychology Department at Herts means joining a faculty internationally acclaimed for its comprehensive research in key areas such as Health and Clinical Psychology, Cognitive Neuropsychology, and Organisational Behavioural Change, linking academic theories directly with practical, real-world applications. Additionally, you will benefit from the department's robust partnerships across commerce and public sector industries which ensure the curriculum's academic rigour and industry relevance.



Curriculum

To obtain the MSc in Psychology you are expected to cover a comprehensive 180-credit curriculum, designed to provide a deep and multifaceted understanding of psychology.

Module 1 must be taken first; module 4 must be passed before taking module 5; and both research modules (4 and 5) must be passed before taking module 9.



1. Conceptual and Historical Issues in Psychology

(15 credits)

As your first module on the course, you'll delve into the foundational approaches of psychology, exploring significant historical figures and influential theories like humanism, behaviourism, and cognitive science. You will critically examine and compare the major themes and debates that have shaped the field of psychology.

2. Developmental and Cognitive Psychology

(15 credits)

In this module, you'll explore key research areas in psychological development, particularly in early childhood, and delve into complex cognitive processes like memory, language, and decision-making. You will critically evaluate research literature, study intelligence and individual differences, and understand the roles of environment and biology in developmental and neurodevelopmental disorders.

3. The Biological Basis of Psychology

(15 credits)

This module offers you a comprehensive understanding of cognitive neuroscience and neuropsychology, covering the nervous system, brain anatomy, cell communication, and the effects of psychoactive drugs. You'll also explore how brain function is integrally linked to cognition and behaviour.

4. Using Data to Address Research Questions

(15 credits)

Before progressing to data collection methods, this module equips you with skills in research design, focusing on quantitative methodologies and the appropriate selection of methods for specific research questions. You'll learn to apply descriptive and inferential statistical methods, using SPSS software, and master professional standards of data analysis and reporting.

5. Social Psychology

(15 credits)

This module offers a deep dive into the core concepts, theories, and research methods of social psychology. You'll explore how these ideas apply to everyday contexts, covering topics like social influence, attitudes, person perception, stereotypes, relationship dynamics, altruism, and social constructionism.

6. Clinical and Forensic Psychology

(15 credits)

This module introduces you to clinical psychology, exploring biological, cognitive, and systemic approaches to mental health conditions, including symptomatology and diagnosis. Additionally, you'll delve into forensic psychology, applying psychological theories to areas like judicial decision-making, criminal investigation, and offender behaviour.

7. Methods of Collecting Data in Psychology

(15 credits)

This module centres on both quantitative and qualitative research methods in psychology. You'll learn about experimental design, sampling methods, and the reliability and validity of research approaches, including ethical considerations and APA reporting standards. By the end, you'll be adept at selecting and executing appropriate research designs and effectively reporting your findings.

8. Individual Differences

(15 credits)

This module delves into the development of psychological theories explaining fundamental human differences. You'll study personality and its disorders, intelligence, cognitive styles, emotion, and motivation, as well as psychometric testing. The course also covers critical evaluation of methodologies used in observing, describing, and predicting behaviour, while engaging with historical and current debates in this field.

9. Advanced Psychology Project

(60 credits)

In this capstone project, you have the opportunity to craft a substantial dissertation of between 13,000 - 15,000 words in length. This project is an opportunity to explore any personal areas of interest or potential future areas of specialisation under the guidance of a suitable supervisor. It emphasises independent research and critical analysis, requiring you to engage deeply with both primary and secondary sources.

Assessments

Each module consists of 6 weeks of teaching and formative (non-graded or low stakes) assessments followed by 2 weeks of graded assessments that must be completed within set deadlines. You will be assessed using a diverse range of assessment methods to evaluate your understanding and skills. These may include:

- ✓ Essays
- ✓ Laboratory reports
- ✓ Timed class tests or quizzes including essay and multiple choice questions
- ✓ Critical analyses
- ✓ Presentations
- ✓ Written classroom discussion forums
- ✓ Class debates
- ✓ Project reports
- ✓ Critical self-reflection exercises

Duration

The programme is delivered in a part-time mode allowing you to combine your studies with other work and life commitments. The total duration of the course is a minimum of 24 months or 2 years for the 180 credit full MSc programme.

Exit Options

You cannot complete the full MSc programme in less than 2 years, but you may choose to exit your programme with a:

1. Postgraduate Diploma after 120 credits and 16 months of study
2. Postgraduate Certificate after 60 credits and 8 months of study.

Entry Dates

You can commence your studies when it is convenient to you with multiple entry dates throughout the year.

For the 2025/2026 academic year:

2025 — 15th September, 10th November

2026 — 19th January, 16th March, 25th May, 20th July



Your Online Learning Experience

This course delivers a fully online and largely asynchronous learning experience through Canvas, the University's virtual learning environment. You will have live drop-in sessions with module leaders as well as tutorial sessions for academic skill-building. Canvas is your personalised portal, providing you with access to study materials, enabling interactions with tutors and peers, facilitating online discussions, and hosting assessments. It also offers you a wealth of online resources.

While the course offers a great deal of flexibility, it is not self-paced. Each module has set start and end dates and includes fixed deadlines for assignment submissions and online tests. This permits for a collaborative learning environment where everyone progresses along the course at the same pace. Modules follow directly one after the other with no scheduled breaks in between. This structure balances the flexibility of online learning with the structure needed to successfully navigate your course and complete it in just 2 years.

Technical Requirements

You can study this course anytime and from anywhere in the world but you will need to have access to a suitable desktop computer or laptop and a stable internet connection.

Recommended Study Time Per Week

While we don't expect you to be online all the time, we recommend dedicating approximately 15 to 20 hours per week to your studies and managing that time flexibly according to your own schedule.

Part-Time & 100% Online

For more information on the online MSc Psychology programme contact an Enrolment Consultant by email on online@herts.ac.uk



Your Degree Certificate

Your degree has the same academic standing as an on-campus full-time degree. As such, your degree certificate is indistinguishable from a campus-based programme, issued directly by UH and makes no mention of 'online' anywhere. Your full transcripts will note the part-time, online mode of study and the results you attained in each module.

Your Graduation

You will have the opportunity to attend your graduation ceremony alongside on-campus students, celebrating your achievement in a memorable and communal setting. Ceremonies are typically held either at the historic Abbey Church of St Albans or at the Weston Auditorium on the de Havilland campus in either September or December.

Dedicated **Student Support** Online

As an online student at the University of Hertfordshire you will receive multi-tier support, tailored to the unique requirements of distance learning and postgraduate study. You will have access to:

- A programme leader for overarching course guidance and assistance.
- Module leaders who provide guidance on assessment queries and clarifying learning points.
- A student support advisor, who will assist you with managing your schedule and pastoral support.
- Online events, meet and greets, Q&A sessions, study skills orientation, and continuous Canvas platform support.
- Student Wellbeing units, University Disability Advisors & Hertfordshire Student's Union.
- 6 'live' online group tutorials with a personal tutor per academic year to help support academic skills development
- Optional weekly drop in sessions available with module leaders during the 6 week learning block of each module



Student
Experience

**5th
in the UK**

Herts is ranked 5th
of all UK
universities in the
Postgraduate
Taught Experience
Survey (PTES 2024)

Career Service

As an online student at the University of Hertfordshire, you will have access to the dedicated Careers and Employment and Enterprise service online, supported by their outstanding jobs portal, HandShake.

They are here to help you to develop your skills and make the best decisions for your future, offering assistance in:

- Searching for work experience opportunities
- Advice and tips on how to create the perfect CV
- Applying for jobs
- Undertaking further study
- Starting your own business

Entry Requirements

- **Academic Qualification:** A Bachelor's degree, equivalent to a UK second-class Honours degree.
- **English Language Proficiency:** For international applicants whose first language is not English, an IELTS score of 6.0 (no less than 6 in reading and writing, 5.5 in any band), or equivalent is required.

We offer multiple exemptions from the Proof of English Language Proficiency requirement for those who have worked or studied in an English-speaking country or those who have passed an English language test other than IELTS. Please speak to an Enrolment Consultant or work through the online application form to find out if you qualify for an exemption.

Fees

The total fee for the MSc Psychology programme at the University of Hertfordshire for the current 2025/2026 academic year is £10,020. To accommodate different financial situations, the University offers several flexible payment plans:

1. Full Payment: Pay the entire fee.
2. Per Module Payment: Pay the fees due for that module's credits. The cost per module or 15 credits is £835 and you will typically study 30 credits or 2 modules per semester. The final project costs £3,340.
3. Instalment Options to break down the semester fee further:
 - Two monthly instalments (75% and 25% of the semester's fee)
 - Three monthly instalments (50%, 25% and 25% of the semester's fee)
 - Four equal monthly instalments (25% of the semester's fee each)

There are no upfront costs related to applying and starting your course. We don't charge an application fee nor a deposit. You will get your notification of fees a few weeks into your first module. There are also no additional costs associated with the programme. You will receive free university access to any required software such as the SPSS statistical software and learning materials.

Funding

All our master's programmes are eligible for government funding in the following countries and territories:

England

You might qualify for a Postgraduate Master's Loan of up to £12,858 provided by the UK Government. For further information, kindly visit [Student Finance England](#).

United States of America (USA)

If you are located in the USA, you might be eligible to apply online for a private [Sallie Mae student loan](#).

Northern Ireland

Should you be pursuing a part-time, online postgraduate master's degree from Northern Ireland, you might qualify for a Tuition Fee Loan of up to £6,500 to assist with tuition fee expenses. For more information, please visit [Student Finance Northern Ireland](#).

Wales

For residents of Wales pursuing a part-time, online master's degree, you might be eligible for Postgraduate Master's Finance, which offers up to £19,255 as a combination of grant and loan. For additional information, please visit [Student Finance Wales](#).

Application Process

Application for all University of Hertfordshire online degrees is through the dedicated portal <https://applyonline.herts.ac.uk>. The application form is simple and intuitive and it typically takes an hour or so to complete the basic Profile, Education, Employment, English and Essay sections.

The supporting documents required are:

- Your final degree certificate*
- The official transcripts or full statement of results for your degree*
- A copy of your, passport or ID
- CV or LinkedIn profile (optional)

*International education documents will need to be translated into English by an official translator before submission.

Personal Statement

As part of your application, you will be requested to submit a 300-500-word essay detailing:

- why you want to study this course
- how it fits with your goals and aspirations
- what your strengths are as a candidate
- how you plan to cope with the demands of the programme

Once submitted, your application will be assessed by our admissions team and a decision will usually be made within five working days.

Please speak to an Enrolment Consultant for additional assistance. They will be able to offer personalised support tailored to your unique background and circumstances.

[Book a meeting](#)



[Apply now!](#)

Regulating Body

University of Hertfordshire programmes are regulated by the Office for Students (OfS) established as the regulator of the English higher education under the provisions of the Higher Education and Research Act 2017 (HERA).

Stay in Touch with

UHOnline

University of Hertfordshire



This brochure was reviewed in May 2025. It contains information on the MSc Psychology (Conversion) online that the University of Hertfordshire ("Herts") intends to run for students who are planning to start their course in 2025-2026. Herts has made every effort to ensure that this information is both helpful and accurate but some changes, for example to courses, facilities or fees, may become necessary due to legitimate staffing, financial, regulatory or academic reasons.

Herts will endeavour to keep changes to a minimum, and to keep applicants informed appropriately. For this reason, it is important that you regularly check the website (<https://online.herts.ac.uk>) for updates or contact Herts using the contact details contained within this document.



Part-Time & 100% Online

For more information on the online MSc Psychology programme contact an Enrolment Consultant by email on online@herts.ac.uk